

Surname	Centre Number	Candidate Number
First name(s)		0

**GCSE**

3100UC0-1



Z22-3100UC0-1

THURSDAY, 19 MAY 2022 – MORNING**HISTORY****Unit 1: Study in Depth****Wales and the Wider Perspective****1C. Depression, War and Recovery, 1930-1951**

1 hour

For Examiner's use only		
Question	Maximum Mark	Mark Awarded
1.	4	
2.	6	
3.	12	
4.	12	
5.	16	
SPaG	3	
Total	53	

INSTRUCTIONS TO CANDIDATES

Use black ink or black ball-point pen.
Do not use gel pen or correction fluid.

Write your name, centre number and candidate number in the spaces at the top of this page.

Answer **all** questions.

Write your answers in the spaces provided in this booklet. If you run out of space, use the additional page(s) at the back of this booklet, taking care to number the question(s) correctly.

INFORMATION FOR CANDIDATES

The number of marks is given in brackets at the end of each question.

Question 5 will assess your ability to construct a balanced, reasoned and well-substantiated extended response.

In addition, your answer to question 5 will assess your ability to spell, punctuate and use grammar accurately and use a wide range of specialist language as appropriate.



JUN223100UC0101

Answer **all** questions.

QUESTION 1

This question is about the coming of war.

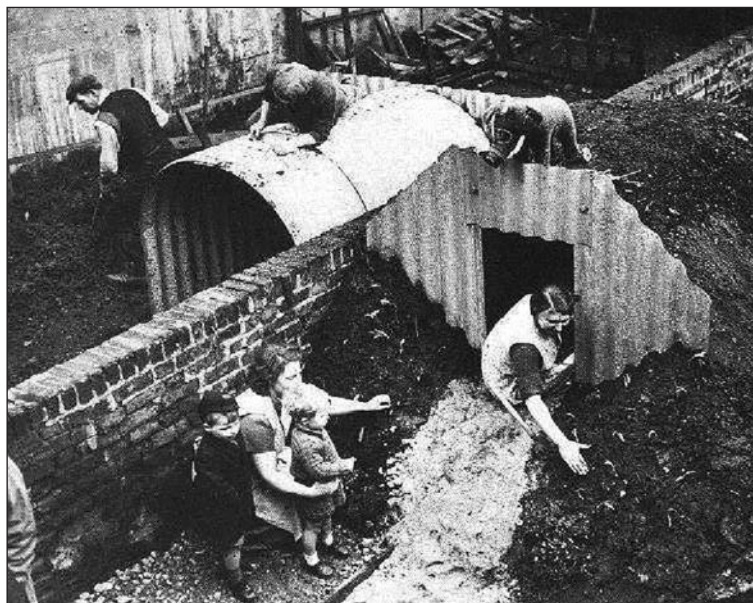
Study the sources below and then answer the question which follows.

Source A

The government has made plans to evacuate children from towns and cities in danger of German bombing to safe areas. The scheme is a voluntary one but clearly children will feel safer and happier away from danger.

[From a public information leaflet issued by the government, July 1939]

Source B



[A photograph of an Anderson Shelter supplied by the British government from May 1939 onwards]





Examiner
only

What can be learnt from Sources A and B about the British government's preparations for war?

[4]

3100UC01
03

4



QUESTION 2

This question is about rebuilding the country after 1945.

Study the source below and then answer the question which follows.

Source C

In 1945, Labour promised that their policies, such as nationalisation, health and housing would improve Britain's economic future. But, they have in fact led to higher taxes and business growth has been held back. A vote for Labour's policies will harm our economic future.

[Winston Churchill, the Conservative Party Leader,
speaking during the general election campaign of 1950]

To what extent does this source accurately explain reactions to the policies of the Labour government between 1945 and 1950?

[6]

[In your answer you should refer to the strengths and limitations of the source and use your own knowledge and understanding of the historical context.]





Examiner
only

Large empty rectangular area for writing, bounded by a solid top and bottom line and three horizontal dotted lines.

3100UC01
05

2
4

Total



05



Examiner only

Large rectangular area with horizontal dotted lines for writing.

3100UC01
07

4

8

Total

--



QUESTION 4

This question is about life during the Depression.

Explain the connections between any **THREE** of the following:

[12]

- Hunger Marches
- Means Test
- 'Making ends Meet'
- Emigration from Wales

Your three choices:

-
-
-

.....

.....

.....

.....

.....

.....

.....

.....

.....

.....

.....

.....

.....

.....

.....

.....

.....

.....

.....

.....

.....

.....

.....

.....



Examiner
only

Large rectangular area with horizontal dotted lines for writing.

2

10

Total

--



Examiner
only

QUESTION 5

This question is about the coming of the Depression.

Read the interpretation below and then answer the question which follows.

The cause of the Depression was the Wall Street Crash. Heavy industries like coal and shipbuilding were badly hit. This was the beginning of the Great Depression and led to a massive rise in unemployment and poverty.

[Charles Rogers, a British Industrialist during the 1920s and 1930s, writing in an article on the 40th anniversary of the Wall Street Crash in *The Economic History Review* magazine published in 1969]

How far do you agree with this interpretation of the cause of the Depression in Britain? [16]

[In your answer you should refer to how and why interpretations of this issue differ. Use your own knowledge and understanding of the wider historical debate over this issue to reach a well-supported judgement.]

Marks for spelling, punctuation and the accurate use of grammar and specialist language are allocated to this question. [3]

.....

.....

.....

.....

.....

.....

.....

.....

.....

.....

.....

.....

.....

.....

.....

.....

.....

.....

.....

.....

.....

.....

.....



Examiner
only

A large rectangular area with a solid top and bottom border and a dotted line for a baseline, intended for writing.



Examiner
only

Additional space for question 5 only:

END OF PAPER

4
12

Total

--

SPaG

3



Question number	Additional page, if required. Write the question number(s) in the left-hand margin.
	<p>Ruled area for answers with horizontal dashed lines.</p>

Examiner only



BLANK PAGE

**PLEASE DO NOT WRITE
ON THIS PAGE**



BLANK PAGE

**PLEASE DO NOT WRITE
ON THIS PAGE**

